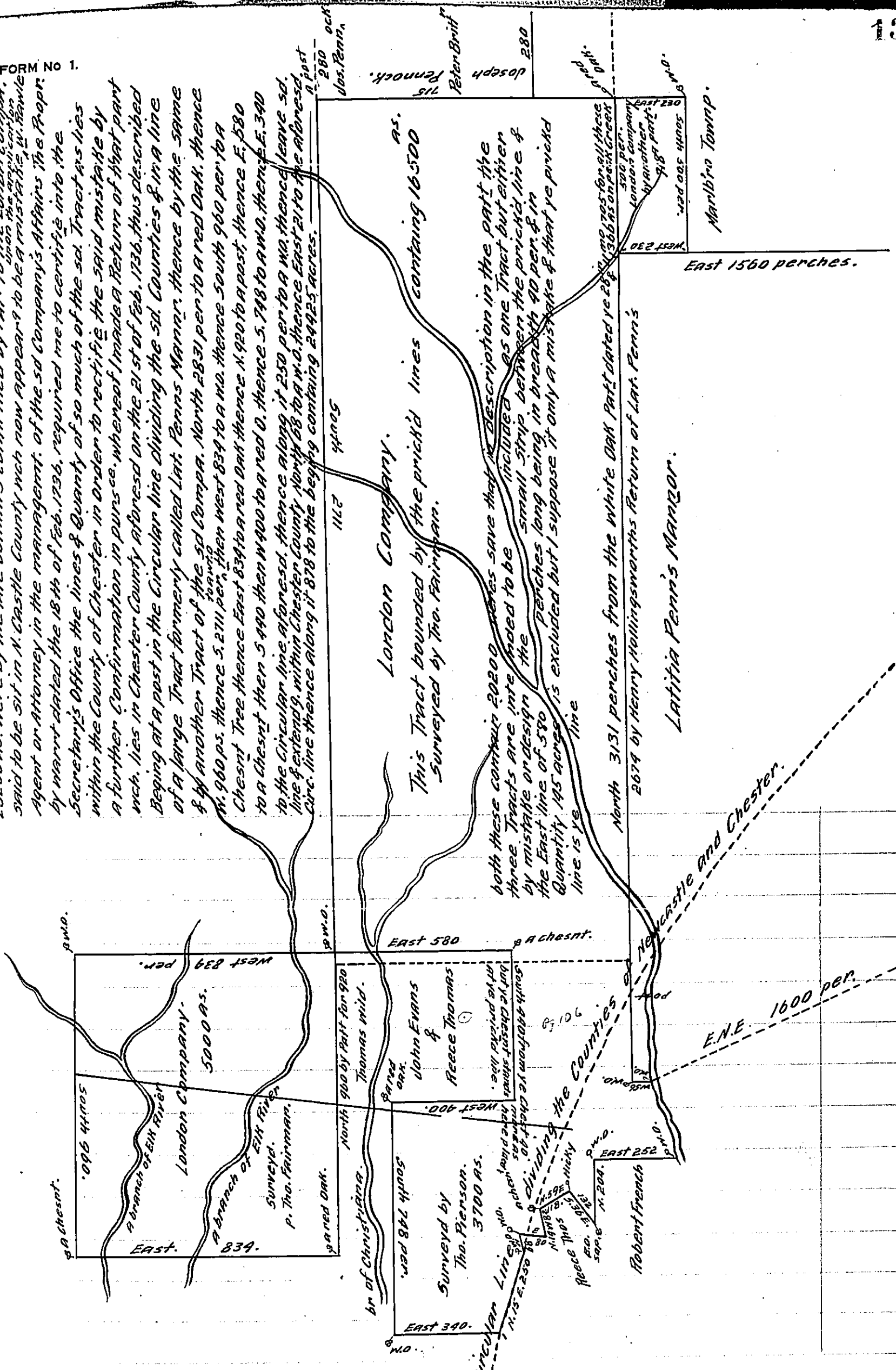


FORM NO 1.

these several Tracts included within one description computed to contain 25200 as. were by the late Comms confirmed by Patt to the Londn Compa. said to be sit in N. Castle County wch now appears to be a mistake in Rowle Agent or Attorney in the management. of the sd Compa's Affairs The Propr. by warrt dated the 18th of Feb. 1796. required me to certify into the Secretary's Office the lines & Quantity of so much of the sd. Tract as lies within the County of Chester in order to rectifie the said mistake by a further Confirmation in pursue. whereof I made a Return of that part wch. lies in Chester County asbred on the 21st of Feb. 1796. thus described Being at a post in the Circular line dividing the sd. Counties & in a line of a large Tract formerly called Lat. Penns Manor. thence by the same & by another Tract of the sd Compa. North 28.31 per to a red Oak. thence N. 90.0 ps. thence S. 27.11 per. then west 839 to a m.o. thence South 960 per to a Chesnt Tree thence East 839 to a red Oak thence N. 92.0 to a post. thence E. 580 to a Chesnt then S. 440 then W. 400 to a red O. thence S. 748 to a m.o. thence E. 340 to the Circular line aforesd. thence along it 250 per to a m.o. thence leave sd. line & extend 9. within Chester County North 88 to a m.o. thence East 21 to the aforesd. Circ. line thence along it 878 to the beging containing 24925 acres.



IN TESTIMONY that the above is a copy of the original remaining on file in the Department of Internal Affairs of Pennsylvania, made conformably to an Act of Assembly approved the 16th day of February, 1833, I have hereunto set my Hand and caused the Seal of said Department to be affixed at Harrisburg, this twentieth day of January 1911

*Henry A. ...*  
Secretary of Internal Affairs.